

UNIVERSAL SCREW

U2 FASTENERS™ Universal Screw™ is ideal for replacing those old deck screws. The features of the Universal Screw™ work together to drive and secure this screw in many types of materials that are used in residential construction.

FEATURES:

- **Chrome 6 free & Prop 65 compliant U-Gold coating.**
- **Structural & ACQ treated lumber compliant. See report ER-454.**
- **Tapper Point**, consisting of the **Cork Screw Start and Blade Cutting Thread** for easy piercing and alleviating strain on the material.
- **Tight Star Recess** system grasps the **U-Bit** tightly and can be installed with one hand.
- Underneath the Universal head **Burrow Pockets** are dynamically engineered to help countersink into the toughest of materials.
- Below the smooth shank is the **Reamer Thread**, which enlarges the hole to create a passage when drawing materials together and reduces tension for the screw head.

CONSTRUCTION SCREW

The **U2 Construction Screw™**, also known as **CS Screw**, is the next generation of construction screws that are replacing lag screws.

FEATURES:

- **Chrome 6 free & Prop 65 compliant U-Gold coating.**
- **Structural & ACQ treated lumber compliant. See report ER-454.**
- **Dome Head** enhances the structural capability.
- **Tapper Point** which consists of the **Cork Screw Start and Blade Cutting Thread** for easy piercing and alleviating strain on the material.
- **Tight Star Recess** system grasps the **U-Bit** tightly and can be installed with one hand.
- **Talon Grip** holds the screw tight to prevent loosening and uses its nibs to dig into the material when countersunk.
- **Reamer Thread** enlarges the hole in the material to create a larger passage when drawing materials together and reduces tension on the screw head.

FEATURES

* Tight Star Recess

This patented driving system is designed to grasp the **U-BIT** tightly and the fastener can be installed with one hand.

* Reamer Thread

Enlarges the hole in the material to create a better passage when drawing material together to reduce tension on the screw.

* Talon Grip

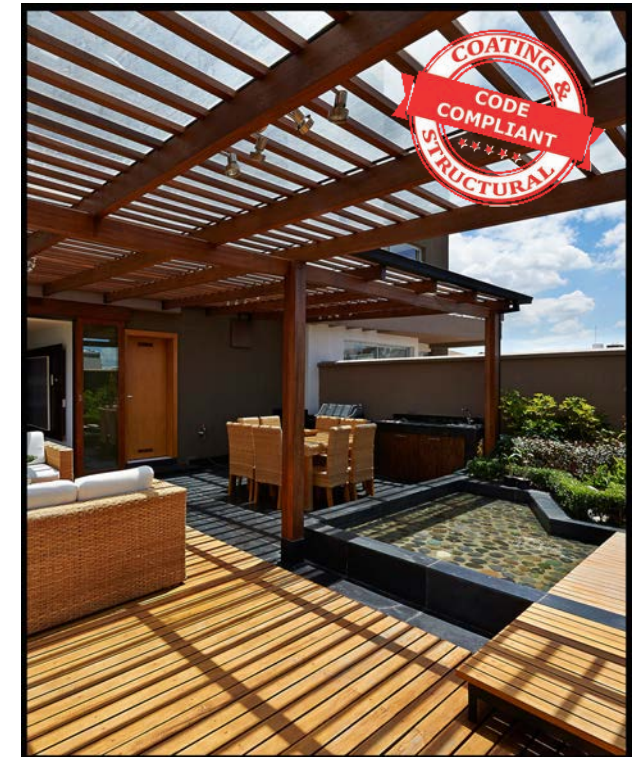
Underneath the screw head of the **CS Screw** the **Talon Grip** holds the screw tight to prevent loosening and uses its nibs to dig into the material when countersunk.

* Tapper Point

The **Tapper Point** consists of the **Cork Screw Start and Blade Cutting Thread** for easy piercing and alleviating strain on the material.

* Burrow Pockets

The **Burrow Pockets** underneath the head of the **Universal Screw** burrow and alleviate pressure when countersinking the head.



Available in lengths from 1-1/4" up to 12" in hardened steel and from 1-1/4" to 4" in 316 Marine Grade Stainless Steel.



Available in lengths from 1-1/2" up to 20" in hardened steel, and in lengths from 2-1/2" to 6" made of 316 Marine Grade Stainless Steel.

BUILDING CODE COMPLIANT = QUALITY FROM THE START
CR 6+ FREE COATING = HEALTH & SAFETY
TIGHT RECESS = EFFICIENCY
TAPPER POINT = TIME SAVER
REAMER THREAD = BATTERY LIFE & PHYSICAL ENERGY SAVER
EFFICIENCY + PRODUCTIVITY = MONEY SAVED



11/2019



U2 FASTENERS™
 sales@u2fasteners.com
 www.u2fasteners.com
 tf: 855-895-7096
 fx: 807-623-6224

Surpassed testing in 0.6pcf ACQ Heavy Duty GROUND CONTACT

U2 FASTENERS™
The GAME CHANGER
in the fastener industry

Fasteners
Engineers and Contractors agree on
for your next project.

FINE SCREW

The **Fine Screw™** is designed especially for carpenters who do fine professional work. When building the most delicate of projects, contractors prefer Fine Screw™ for its modest head size. Also available in **WHITE**.

FEATURES:

- **Chrome 6 free & Prop 65 compliant U-Gold** coating.
- With its slim shank and bulging thread this screw can be used without damaging even the hardest wood.
- **Tapper Point** which consists of the **Cork Screw Start and Blade Cutting Thread** for easy piercing and alleviating strain on the material.
- **Tight Star Recess** system grasps the U-Bit tightly and can be installed with one hand.

Available in lengths of 1-1/4" to 5" in case hardened steel, **WHITE** and in lengths of 1-1/2" to 3" made of 316 Marine Grade Stainless Steel.



RE-FINE SCREW

The **Re-Fine Screw™** is the brother to the Fine Screw™ but has the RE-FINE Thread that depresses synthetic materials for a clean finished appearance. Also available in **WHITE**.

FEATURES:

- **Chrome 6 free & Prop 65 compliant U-Gold** coating.
- With its slim shank and bulging thread this screw can be used without damaging even the hardest wood.
- **Tapper Point** which consists of the **Cork Screw Start and Blade Cutting Thread** for easy piercing and alleviating strain on the material.
- **Tight Star Recess** system grasps the U-Bit tightly and can be installed with one hand.
- **RE-FINE Thread** depresses synthetic surface materials for a clean finished appearance.

Available in lengths of 2" to 3-1/8" in case hardened steel in **WHITE** case hardened steel.



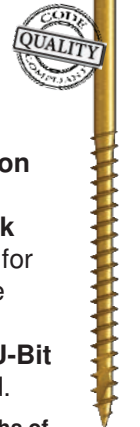
CAP SCREW

The **Cap Screw™** is an ideal light duty interior and exterior screw. This screw makes all your small projects easier with the drawdown strength of the head and the clean finish.

FEATURES:

- **Chrome 6 free & Prop 65 compliant U-Gold** coating.
- **Dome Head** with rim and **Cutting Ribbon** underhead.
- **Tapper Point** which consists of the **Cork Screw Start and Blade Cutting Thread** for easy piercing and alleviating strain on the material.
- **Tight Star Recess** system grasps the **U-Bit** tightly and can be installed with one hand.

Available in lengths 1-1/4" to 3-1/8" and in lengths of 1-1/4" to 1-1/2" available in 305 Grade Stainless Steel.



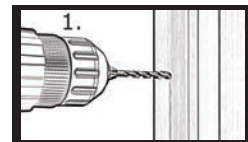
TOPSTAR SCREW

The adjustable screw replaces shimming and can make door hanging a one person job.

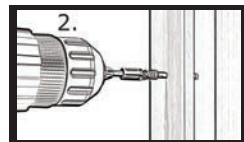
The **TopStar™** is designed to replace shims when levelling doors, windows and cabinets.

Use the **Crown Bit** to install and only the bit to re-adjust to level.

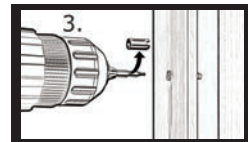
Available in lengths 2-1/2", 3-1/8" and 4".



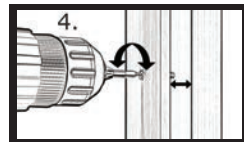
1. Predrill frame/jamb with 5/16" drill bit.



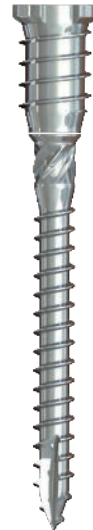
2. Engage crown bit into TopStar screw head and drive flush to surface of frame or jamb.



3. For adjustments remove crown from bit.



4. Engage bit into center hole of TopStar screw head and adjust to your requirements.



VINYL EXTRUSION SCREW

The Vinyl Extrusion Screw™ is an adjustable screw ideal for vinyl window retro-fits over old aluminum window frames. It has a small low profile white powder coated head and tek drill point.

FEATURES:

- **Dome Head, Powder coated WHITE** with rim.
- **Tek Point and Blade Cutting Thread** for easy piercing and alleviating strain on the material.
- **Tight Star Recess** system grasps the U-Bit tightly.

Available in length of 10 x 3-1/8" in case hardened carbon steel.



STEEL SIDING SCREW

The Steel Siding Screw™ is an ideal metal roofing, siding, garage door seal, trim and flashing screw, with a low profile white powder coated head and EPDM washer.

FEATURES:

- **Dome Head, Powder coated WHITE** with rim and black EPDM rubber washer.
- **Tapper Point** which consists of the **Cork Screw Start and Blade Cutting Thread** for easy piercing and alleviating strain on the material.
- **Tight Star Recess** system grasps the **U-Bit** tightly.

Available in length of 10 x 1-1/2" in case hardened carbon steel.



U-BITS

The **U-Bits™** are specifically designed to fit snug & firm on the **Tight Star Recess** of the U2 FASTENERS screw assortment. However, U2 FASTENERS also fit the traditional star drive. **U-Bits™** are impact driver ready and are made of hardened steel to prevent wear and tear.

Sizes range of 1" to 3" in T-10, T-15, T-20, T-25, T-30 and T-40. Packaged in cards of two bits per card or in packs of 25pcs.

